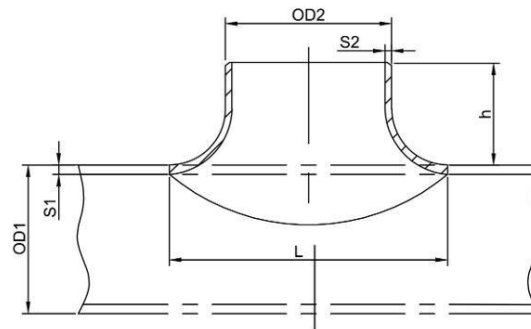
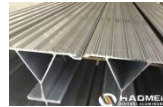
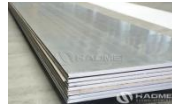
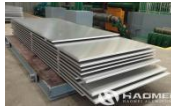


■ 铜镍马鞍 Saddle

DIN86087

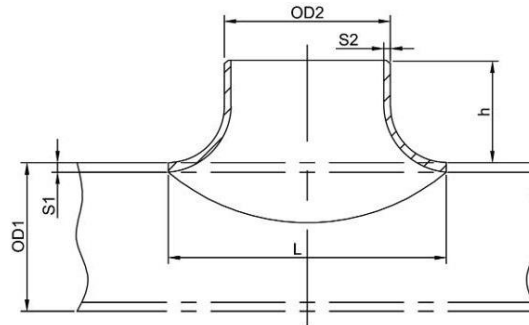


specification	OD1xOD2	S1 S2	h	L	Weight
inch	mm	mm	mm	mm	kg
4"x2"	108x57	2.5x1.5	40	97	0.40
4"x2 1/2"	108x76	2.5x2	50	126	0.40
4"x3"	108x89	2.5x2	55	149	1.02
4"x4"	108x108	2.5x2.5	75	188	0.70
5"x2"	133x57	2.5x1.5	40	97	0.40
5"x2 1/2"	133x76	2.5x2	50	126	0.40
5"x3"	133x89	2.5x2	55	149	1.24
5"x4"	133x108	2.5x2.5	75	188	1.10
5"x5"	133x133	2.5x2.5	85	233	1.10
6"x2 1/2"	159x76	2.5x2	50	126	0.40
6"x3"	159x89	2.5x2	55	149	1.18
6"x4"	159x108	2.5x2.5	75	188	1.30
6"x5"	159x133	2.5x2.5	85	233	2.10
6"x6"	159x159	2.5x2.5	95	279	2.25
7"x2 1/2"	194x76	3x2	50	126	1.53
7"x3"	194x89	3x2	55	149	1.35
7"x4"	194x108	3x2.5	75	188	1.42
7"x5"	194x133	3x2.5	85	233	2.38
7"x6"	194x159	3x2.5	95	279	2.86
7"x7"	194x194	3x3	110	334	3.50

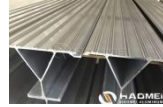
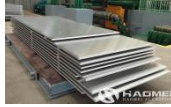


铜镍马鞍 Saddle

DIN86087

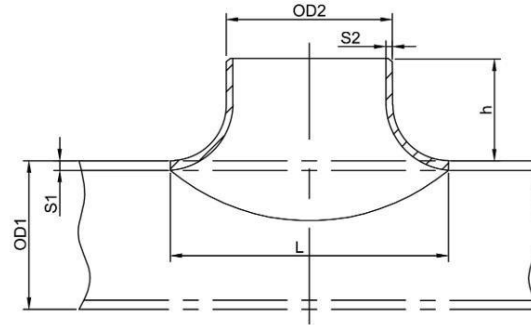


specification	OD1xOD2	OD1xOD2	h	L	Weight
inch	mm	mm	mm	mm	kg
8"x3"	219x89	3x2	55	149	0.90
8"x4"	219x108	3x2.5	75	188	1.80
8"x5"	219x133	3x2.5	85	233	2.60
8"x6"	219x159	3x2.5	95	279	3.60
8"x7"	219x194	3x3	110	334	4.90
8"x8"	219x219	3x3	125	379	5.70
10"x4"	267x108	3x2.5	75	188	1.90
10"x5"	267x133	3x2.5	85	233	2.60
10"x6"	267x159	3x2.5	95	279	3.60
10"x7"	267x194	3x3	110	334	4.90
10"x8"	267x219	3x3	125	379	5.70
10"x10"	267x267	3x3	155	447	7.90
12"x5"	324x133	4x2.5	85	233	2.60
12"x6"	324x159	4x2.5	95	279	3.60
12"x7"	324x194	4x3	110	334	4.90
12"x8"	324x219	4x3	125	379	7.70
12"x10"	324x267	4x3	155	447	9.70
12"x12"	324x324	4x4	185	560	12.90
14"x6"	368x159	4x2.5	95	279	3.60
14"x7"	368x194	4x3	110	334	4.90

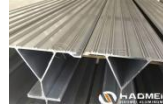
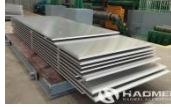


铜镍马鞍 Saddle

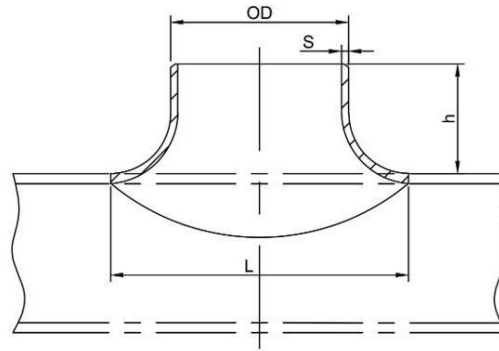
DIN86087



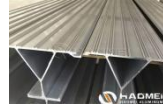
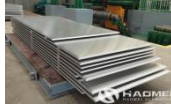
specification	OD1xOD2	S1 S2	h	L	Weight
inch	mm	mm	mm	mm	kg
14"x8"	368x219	4x3	125	379	7.70
14"x10"	368x267	4x3	155	447	9.90
14"x12"	368x324	4x4	185	560	12.90
14"x14"	368x368	4x4	200	613	14.85
16"x7"	419x194	4x3	110	334	4.90
16"x8"	419x219	4x3	125	379	7.70
16"x10"	419x267	4x3	155	447	9.70
16"x12"	419x324	4x4	185	560	12.90
16"x14"	419x368	4x4	200	613	14.85
16"x6"	419x419	4x4	225	680	18.51
18"x8"	457x219	4.5x3	125	379	7.70
18"x10"	457x267	4.5x3	155	447	9.70
18"x12"	457x324	4.5x4	185	560	12.90
18"x14"	457x368	4.5x4	200	613	14.85
18"x16"	457x419	4.5x4	225	680	18.51
18"x18"	457x457	4.5x4.5	250	800	24.80
20"x10"	508x267	5x3	155	447	9.70
20"x12"	508x324	5x4	185	560	13.50
20"x14"	508x419	5x4	200	613	14.85
20"x16"	508x457	5x4.5	225	680	18.57
20"x18"	508x508	5x5	250	800	24.80



■ 铜镍马鞍 Saddle
EEMUA 234

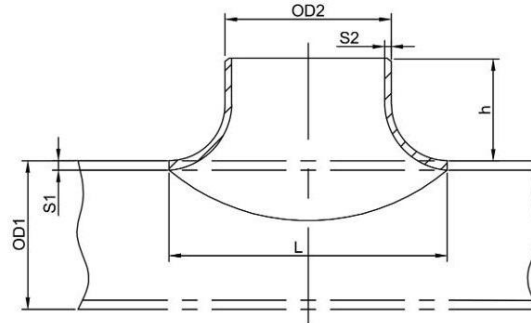


specification	OD	S 16bar	S20bar	h	L	Weight 16bar	Weight 20bar
inch	mm	mm	mm	mm	mm	kg	kg
1 1/4"	38	2.5	2.5	30	64	0.18	0.18
1 1/2"	44.5	2.5	2.5	35	74	0.25	0.25
2"	57	2.5	2.5	35	97	0.40	0.40
2 1/2"	76.1	2.5	2.5	35	126	0.65	0.65
3"	88.9	2.5	2.5	35	149	0.95	0.95
4"	108	3	3	35	188	1.56	1.56
6"	159	3	3.5	50	279	3.12	3.64
8"	219.1	4	4.5	55	379	7.60	8.55
10"	267	4.5	5.5	75	447	13.05	15.95
12"	323.9	5.5	7	85	560	17.87	22.74



铜镍马鞍 Saddle

DIN86087



specification	OD1xOD2	S1xS2	h	L	Weight
inch	mm	mm	mm	mm	kg
1/2"x1/2"	20x20	1x1	20	32	0.03
3/4"x1/2"	25x20	1.5x1	20	32	0.04
3/4"x3/4"	25x25	1.5x1.5	22	40	0.05
1"x3/4"	30x25	1.5x1.5	22	40	0.07
1"x1"	30x30	1.5x1.5	30	50	0.08
1 1/4"x1"	38x30	1.5x1.5	30	50	0.09
1 1/4"x1 1/4"	38x38	1.5x1.5	35	64	0.11
1 1/2"x1 1/4"	44.5x38	1.5x1.5	35	64	0.14
1 1/2"x1 1/2"	44.5x44.5	1.5x1.5	35	74	0.15
2"x1 1/4"	57x38	1.5x1.5	35	64	0.14
2"x1 1/2"	57x44.5	1.5x1.5	35	74	0.15
2"x2"	57x57	1.5x1.5	40	97	0.20
2 1/2"x1 1/4"	76x38	2x1.5	35	64	0.34
2 1/2"x1 1/2"	76x44.5	2x1.5	35	74	0.30
2 1/2"x2"	76x57	2x1.5	40	97	0.52
2 1/2"x2 1/2"	76x76	2x2	50	126	0.40
3"x1 1/4"	89x38	2x1.5	35	64	0.36
3"x1 1/2"	89x44.5	2x1.5	35	74	0.44
3"x2"	89x57	2x1.5	40	97	0.56
3"x2 1/2"	89x76	2x2	50	126	0.55
3"x3"	89x89	2x2	55	149	0.76
4"x1 1/2"	108x44.5	2.5x1.5	35	74	0.30